

2018 Oberon Rally

3rd November 2018



Round 6 Pipe King AMSAG Southern Cross Rally Series

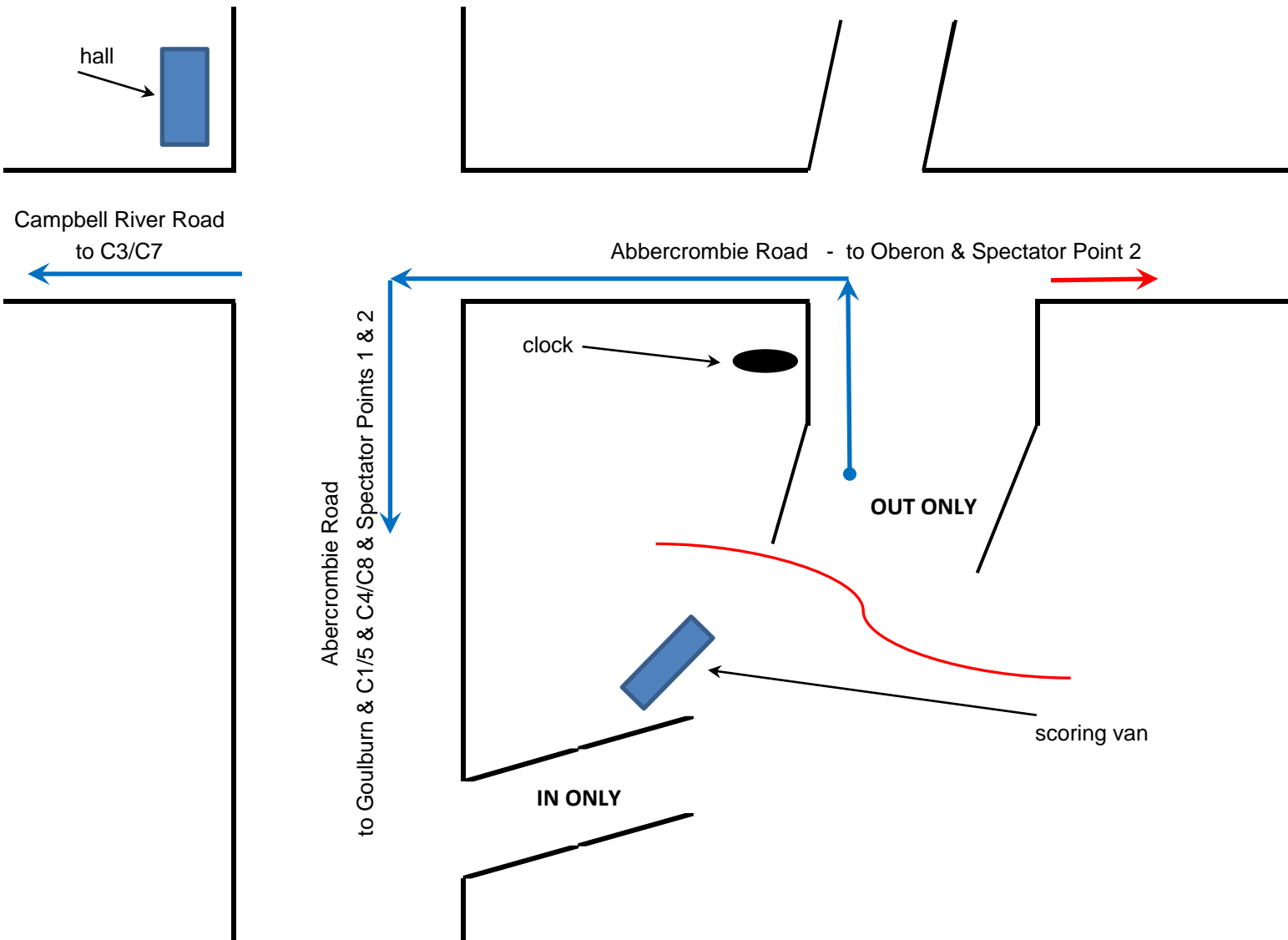
SERVICE INSTRUCTIONS



SERVICE TIMES

SERVICE 1	15 mins	Car 1 Due: 11.01	Your Car Due: _____
SERVICE 2 MEAL BREAK	1 hour	Car 1 Due: 12.52	Your Car Due: _____
SERVICE 3	15 mins	Car 1 Due: 15.14	Your Car Due: _____

SERVICE IN / OUT POINTS



Spectator Point 1 - Stages 1 & 5

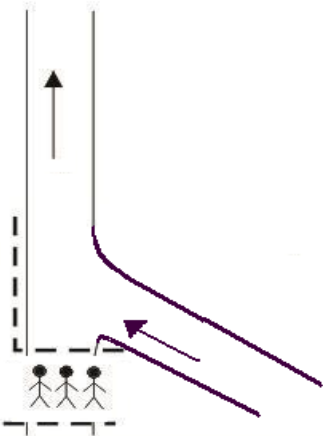
Car 1 due approx. 10.20am & 2.30pm

From Black Springs, travel towards Goulburn. After 1.2k TURN LEFT into Riverview Road - TWO WAY TRAFFIC. After approx. 2.3k go straight on past Sapphire Bend Road then continue along Riverview Road (road turns left at 7.2k) Continue along Riverview Road and TURN HARD RIGHT at Tower Road.

Continue uphill passed the fire tower then to the Spectator Point.

Total distance - 15.5k

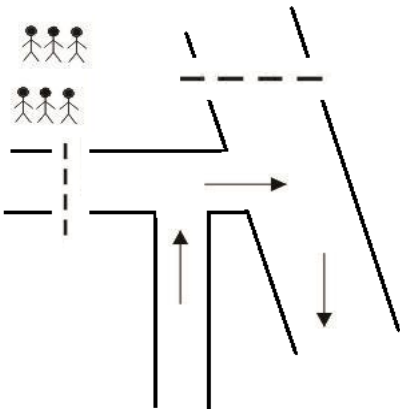
Travel Time- approx 23 minutes



Spectator Point 2 - Stages 2 & 6

Car 1 due approx. 10.50am & 3.00pm

From Black Springs, travel towards Goulburn. After 1.2k TURN LEFT into Riverview Road - TWO WAY TRAFFIC. After approx. 2.3k TURN LEFT onto Sapphire Bend Road then continue 1.5k to Spectator Point.

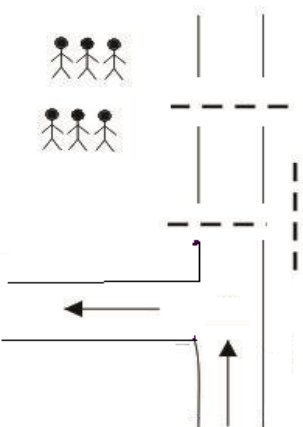


Spectator Point 3 - Stages 2 & 6

Car 1 due approx. 10.50am & 3.00pm

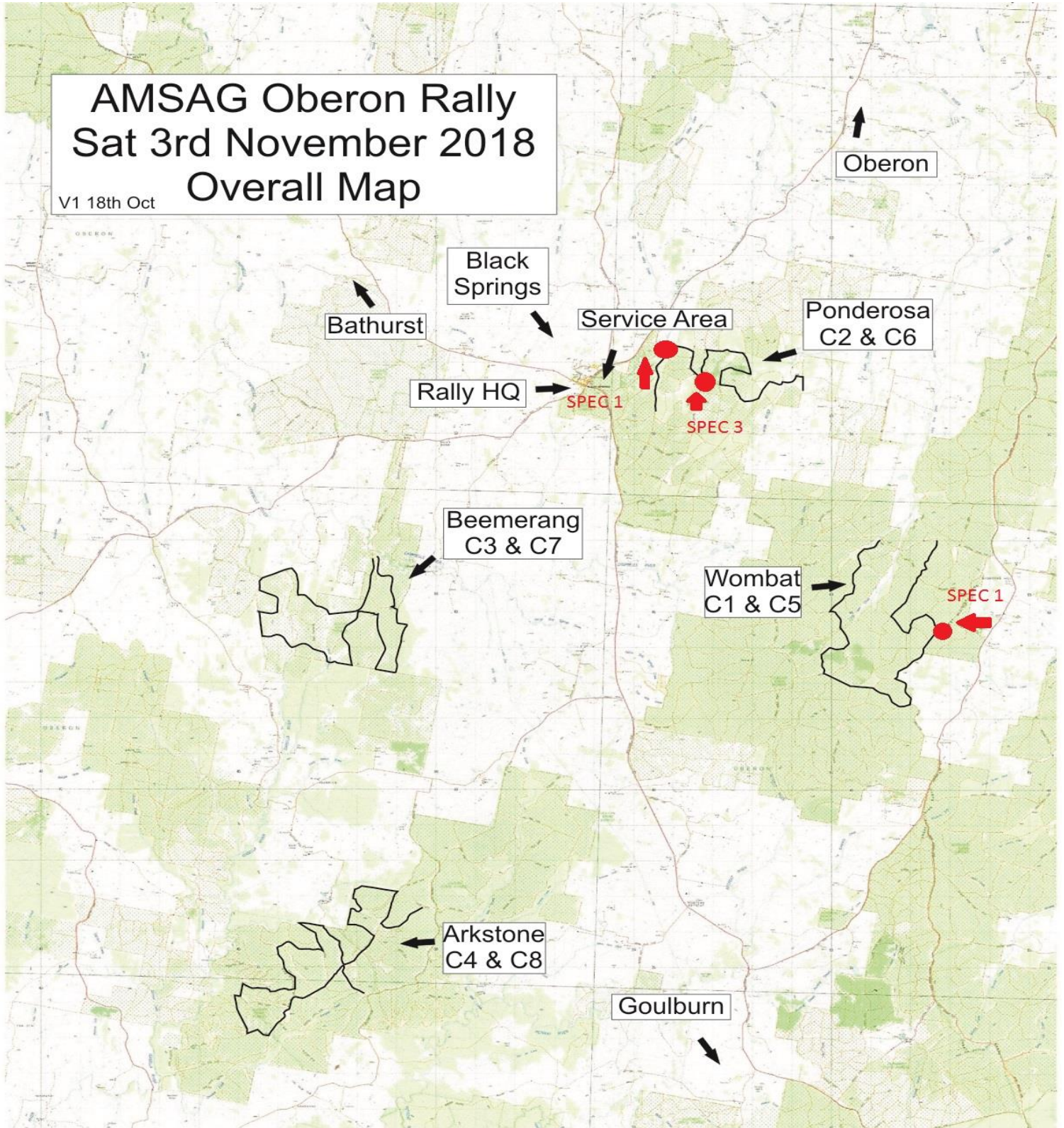
From Black Springs, travel towards Oberon. After 2k TURN RIGHT into Ponderosa Road, continue for 300m to Spectator Point.

Travel Time- approx 3 minutes



AMSAG Oberon Rally Sat 3rd November 2018 Overall Map

V1 18th Oct



Please Note: Spec 3 shown on the map is actually SPECTATOR POINT 2
Spec 1 shown in C2/C6 is actually SPECTATOR POINT 3